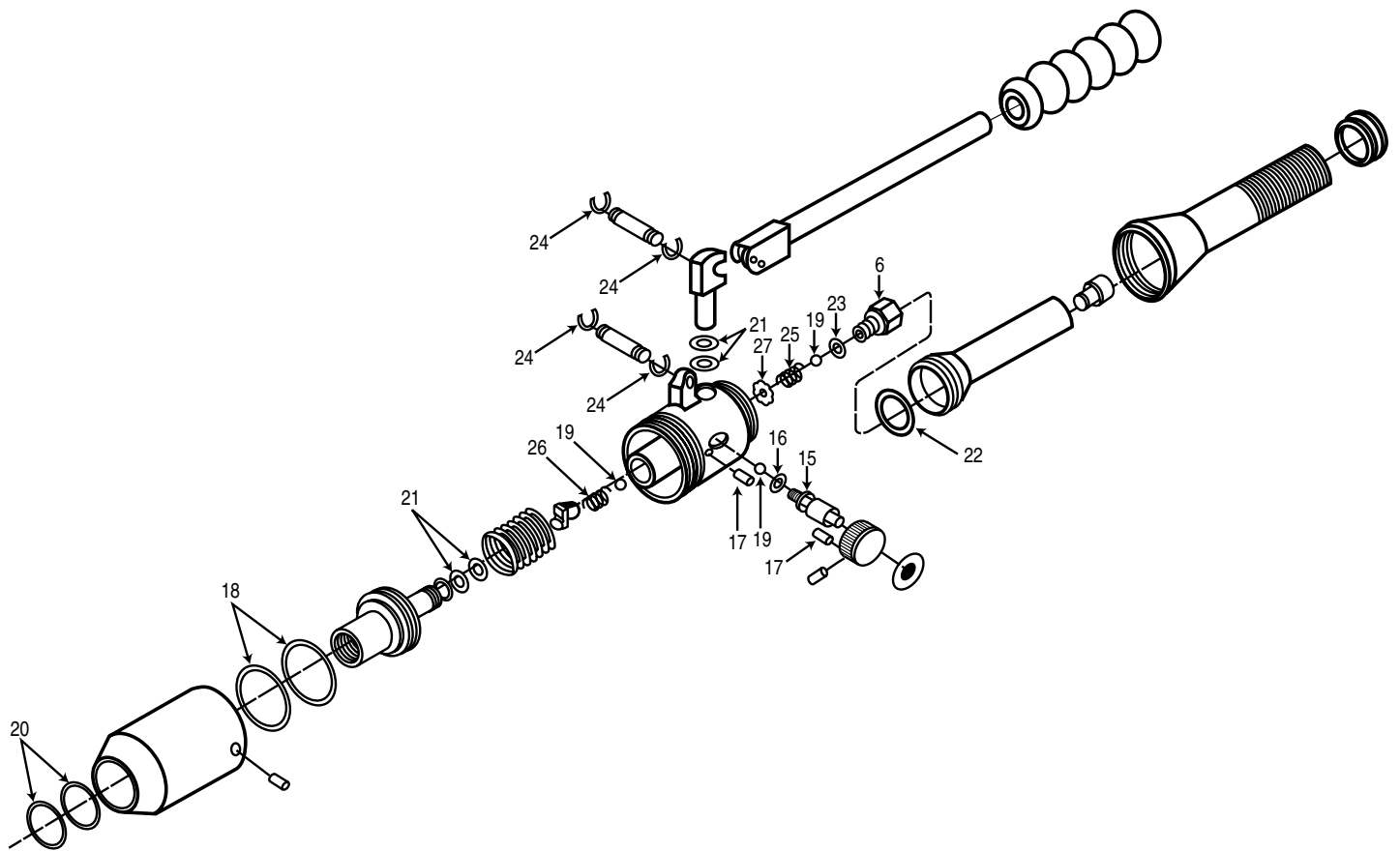




**Repair
Parts
Sheet**

**KLP 2
Hydraulic Driver**



To protect your warranty, use only GB/Enerpac hydraulic oil.

KLP 2 Hydraulic Driver

Repair to the hydraulic driver is accomplished by replacing items contained in the kit listed. If an item is not in either kit, the item is not available.

Release valve kit— KLP2K2:

Item No.	Description	Quantity
15	Release Valve	1
16	O-Ring (7mm)*	1
18	Piston Packing*	2
20	Piston Rod Packing*	1
21	Plunger and Piston Packing*	2

Item No.	Description	Quantity
6	Intake Seat and Valve	1
17	Roll Pin (3/16 Dia.)	2
19	Steel Ball (3/16 Dia.)*	2
22	Retainer (26.5mm O-Ring)*	1
23	Seat Washer*	1
24	Retaining Ring, E-Type*	4
25	Inlet Check Spring*	1
26	Outlet Check Spring*	1
27	Retaining Washer*	1

*Common Replacement Parts

■ Unavailable Parts

REPAIR AND SERVICE INSTRUCTIONS: For repair service and parts contact your nearest GB ELECTRICAL Service Center. The GB ELECTRICAL Service Center will provide complete and prompt service on all GB ELECTRICAL products.

PARTS AND SERVICE: For quality workmanship and genuine GB ELECTRICAL parts, select an Authorized GB Service Center for your repair needs. Only repairs performed by an Authorized Service Center displaying the official GB Authorized sign are backed with full factory warranty. Contact GB Electrical (414) 352-4160 for the name of the nearest GB Authorized Service Center.

WARRANTY: GB ELECTRICAL, INC. warrants its product against defects in workmanship and materials for 1 year from date of delivery to user. Chain is not warranted. Warranty does not cover ordinary wear and tear, abuse, misuse, overloading, altered products or use of improper fluid.

WARRANTY RETURN PROCEDURE: When question of warranty claim arises, send the unit to the nearest GB Authorized Service Center for inspection, transportation prepaid. Furnish evidence of purchase date. If the claim comes under the terms of our warranty the Authorized Service Center will REPAIR OR REPLACE PARTS AFFECTED and return the unit prepaid.

