

**Parts List**

Item Number	Part Number	Number Required	Description
<b>1</b>	<b>BWF800</b> ...Includes ...	<b>1</b>	<b>Frame Assembly</b>
2		4	Lock Washer 3/8" dia.
3		4	Washer 13/32" dia.
4		4	Capscrew 3/8" - 16 x 1"
5	ZCK651900	1	Undercarriage Assembly
6	ZC124106 ...Includes ...	2	Wheel
		2	*Cotter Pin 13/32" x 1"
		4	*Washer 13/32"

\*Common Replacement Parts

## BWF888 Parts List

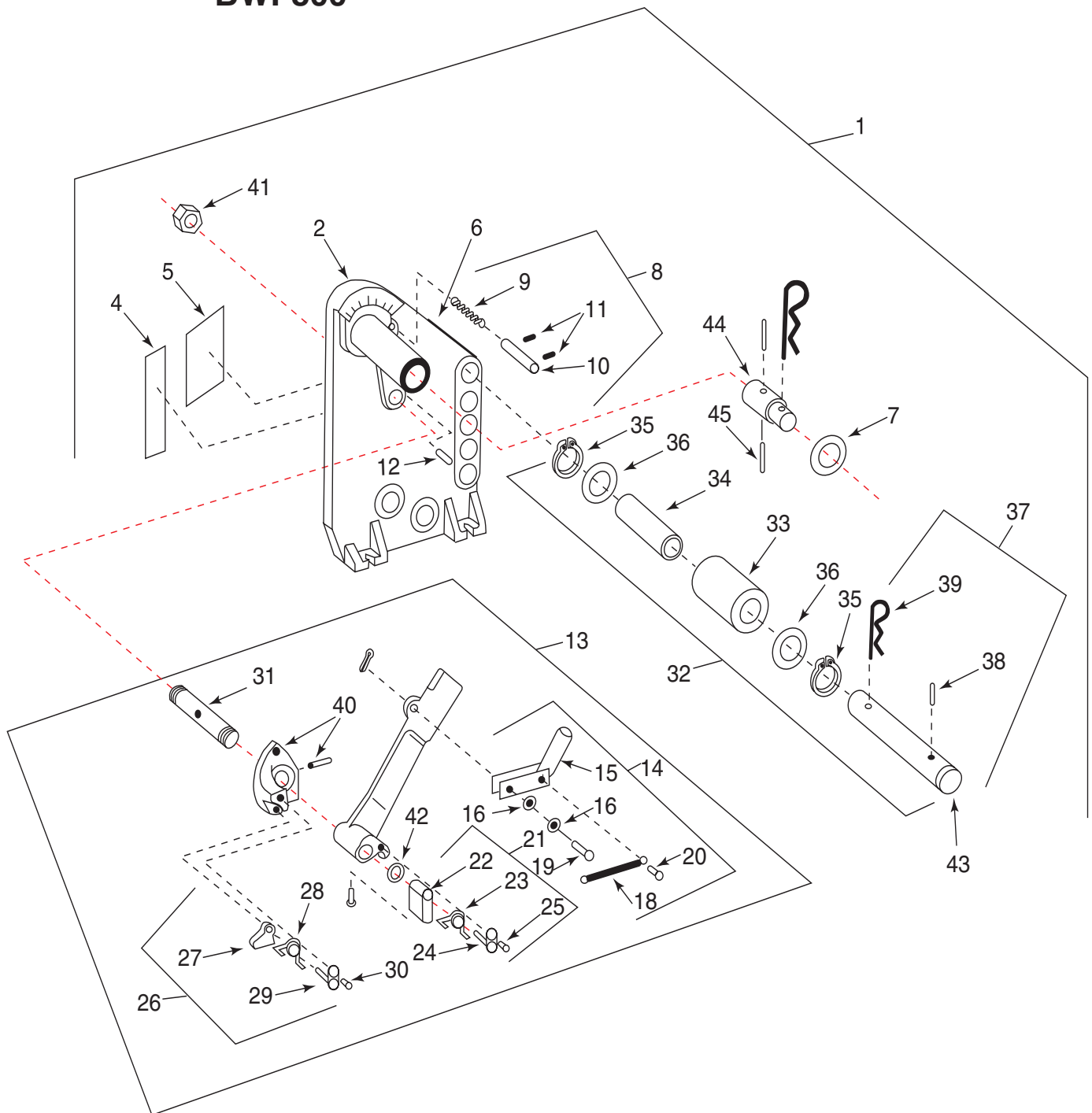
Item Number	Part Number	Number Required	Description
<b>1</b>	<b>BWF800</b> ... Includes ...	<b>1</b>	<b>Frame Assembly</b>
2	ZCK13900	1	Frame
4	ZCK86026	1	Instruction Decal 1 of 2
5	ZCK867026	1	Instruction Decal 2 of 2
6	ZCM240026	1	Release Decal
7	ZCL893108	1	Retaining Washer
12	B1152057	1	Spring Pin
31	CK304104	1	Shaft
41	ZF67123	1	Nut, Ratchet
44	ZCL970225	1	Shaft
45	ZB1132057	2	Pins
<b>13</b>	<b>BF49</b> ... Includes ...	<b>1</b>	<b>Ratchet Assembly</b>
40	ZCK103111	1	Bracket Assembly w/pin
42	ZCK578044	1	Retaining Ring
<b>14</b>	<b>BW72</b> ... Includes ...	<b>1</b>	<b>Lever Kit</b>
15	ZCM243070	1	Lever
16	ZB1084108	2	Flat Washer
18	ZCK29110	1	Spring
19	ZCL382061	1	Clevis Pin
20	ZCK24305	1	Drive Stud
<b>21</b>	<b>BW74</b> ... Includes ...	<b>1</b>	<b>Drive Pawl Kit</b>
22	ZCR231885	1	Drive Pawl
23	ZCK30110	1	Spring
24	ZF28900	1	Rivet Plate
25	ZCR307028	1	Capscrew
<b>26</b>	<b>BW75</b> ... Includes ...	<b>1</b>	<b>Hold Pawl Kit</b>
27	ZCK230885	1	Hold Pawl
28	ZCK30110	1	Spring
29	ZF28900	1	Rivet Plate
30	ZCK307028	1	Capscrew
<b>32</b>	<b>BF41 (also includes BF47)</b> ... Includes ...	<b>1</b>	<b>Roller &amp; Shaft Assembly</b>
33	ZCM260281	1	Urethane Roller/Soft Roller
34	ZCM105268	1	Roller Tube
35	ZCK380044	2	Retaining Ring
36	ZCK580107	2	Retaining Washer
<b>8</b>	<b>BW76</b> ... Includes ...	<b>1</b>	<b>Pin Kit</b>
9	ZCM47061	1	Spring
10	ZCM47061	1	Pin
11	ZB1055057	2	Pin

\*Common Replacement Parts

Chart continued on next page.

Item Number	Part Number	Number Required	Description
<b>37</b>	<b>BF47</b>	<b>1</b>	<b>Shaft Assembly</b>
	... Includes ...		
38	ZB1138057	1	Pin
39	ZCL892058	1	Cotter Pin
43	ZCM101061	1	Shaft
	... Includes ...		
	ZCK292107	2	Bearings

## Bender Frame Assembly BWF800

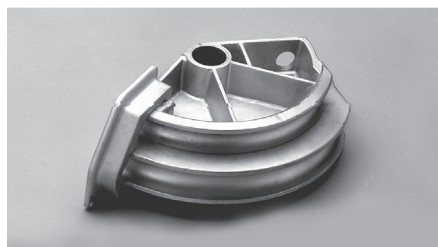


## Bending Shoes



**BT57510**  
1/2" - 3/4" - 1" Thinwall

1. Jaw - BZ1306
2. Chain - NSS



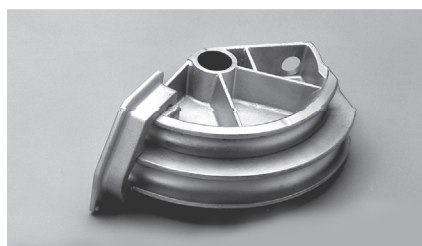
**BT12515**  
1 1/4" - 1 1/2" Thinwall

1. Jaw - BZ1307
2. Chain - NSS
3. Tooth Insert - BTI12520



**BR57510**  
1/2" - 3/4" - 1" Rigid

1. Jaw - BZ1306
2. Chain - NSS



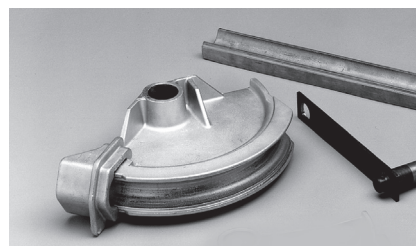
**BR12515**  
1 1/4" - 1 1/2" Rigid

1. Jaw - BZ1307
2. Chain - NSS
3. Tooth Insert - BTI12520



**BR20000**  
2" Aluminum

1. Jaw - BZ1308
2. Chain - NSS
3. Tooth Insert - BTI12520-



**BT2000**  
2" Thinwall

1. Shoe - CK341900
2. Jaw - BZ13081
3. Chain - NSS  
Strap & Roller Assembly - BF42
4. Shaft
5. Steel Roller
6. Strap } BF48
7. Hairpin }
8. Follow Bar - BZ1345
9. Tooth Insert - BTI12520

**REPAIR AND SERVICE INSTRUCTIONS:** For repair service and parts contact your nearest GARDNER BENDER Service Center. The Service Center will provide complete and prompt service on all GARDNER BENDER products.

**PARTS AND SERVICE:** For quality workmanship and genuine GARDNER BENDER parts, select an Authorized GB Service Center for your repair needs. Only repairs performed by an Authorized Service Center displaying the official GB Authorized sign are backed with full factory warranty. Contact GARDNER BENDER (800) 624-4320 for the name of the nearest GB Authorized Service Center.

**WARRANTY:** GARDNER BENDER warrants its products against defects in workmanship and materials for 1 year from date of delivery to user. Chain is not warranted. Warranty does not cover ordinary wear and tear, abuse, misuse, overloading, altered products or use of improper fluid.

**WARRANTY RETURN PROCEDURE:** When question of warranty claim arises, send the unit to the nearest GB Authorized Service Center for inspection, transportation prepaid. Furnish evidence of purchase date. If the claim comes under the terms of our warranty the Authorized Service Center will REPAIR OR REPLACE PARTS AFFECTED and return the unit prepaid. **M**



N85 W12545 • Menomonee Falls, WI 53051 • 1-800-624-4320 • Fax 262-293-0952  
6615 Ordan Drive • Mississauga, Ontario L5T 1X2 • 905-564-5749 • Fax 905-564-0305

RPS-0046 0515