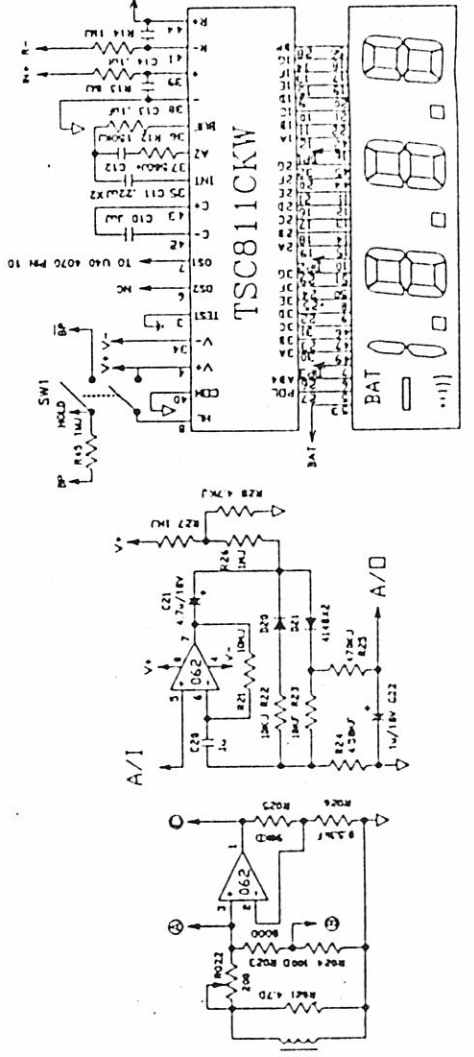
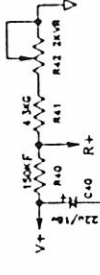
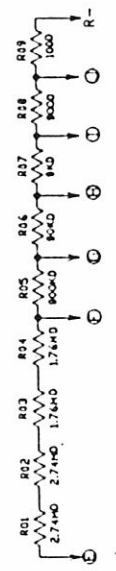
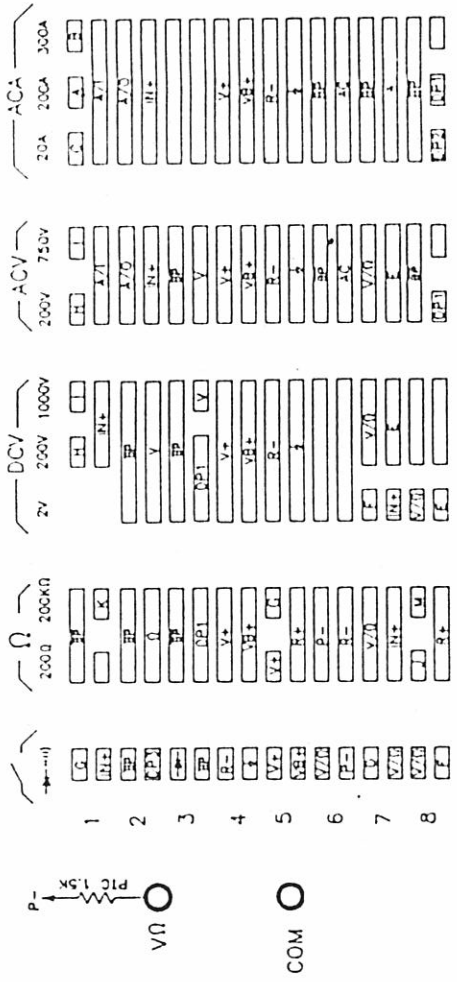


MODEL: DSA-400

1	2	3	4	5	6	7	8	9	10	11	12	13	14	15	16	17	18	19	20
D	...		-	/	DP1	E3	D3	DP2	E2	D2	C2	B2	A2	DP1	F1	G1	E1	D1	
21	22	23	24	25	26	27	28	29	30	31	32	33	34	35	36	37	38	39	40
C1	B1	m	M	K	Ω	A	V	n	F	μHz	K	M	H	m	μ	F	°C		
41	42	43	44	45	46	47	48	49	50	51	52	53	54	55	56				
A1	m	F2	C2	C3	B3	...	C	A3	F3	G3	...	m	A	C	A	B	P		



80.2.8	MODEL:950	950
80.6.12		
80.8.1		



CALIBRATION PROCEDURE

THE PROCEDURE SHOULD BE PERFORMED AT AN AMBIENT TEMPERATURE OF $23 \pm 5^{\circ}\text{C}$ AND AT A RELATIVE HUMIDITY OF LESS THAN 75%.

1) CALIBRATION FOR VOLTAGE

1. SET THE FUNCTION RANGE TO THE DCV RANGE.
2. SET THE OUTPUT OF THE DC CALIBRATOR FOR 1.90V $\pm 0.02\%$ AND CONNECT IT TO THE "V- Ω ", AND "COM" INPUT TERMINALS.
3. ADJUST R42 UNTIL THE DISPLAY READS 1.90V ± 1 DIGIT.
4. CAREFULLY INSPECT THE DCV RANGES, YOUR READINGS SHOULD BE WITHIN SPECIFICATION $\pm 0.5\% \pm 1$ DIGIT.
5. THERE IS NO ADJUSTMENT FOR ACV RANGE, CALIBRATE DCV FIRST.
6. CAREFULLY INSPECT THE ACV RANGE, YOUR READING SHOULD BE WITHIN $\pm 2\% + 4\text{DGTS}$ (200V), $\pm 1.5\% + 4\text{DGTS}$ (750V) OF THE ACV CALIBRATION SOURCE.

2) CALIBRATION FOR CURRENT

1. SET THE FUNCTION RANGE TO THE 200A ACA RANGE.
2. SET THE OUTPUT OF THE AC AMPERS AMPLIFIER FOR 100A AND CLAMP THE TESTED WIRE IN THE CENTER OF THE TESTING WIRE.
3. ADJUST R022 UNTIL THE DISPLAY READS 100A.
4. CAREFULLY INSPECT THE OTHER ACA RANGES, YOUR READINGS SHOULD WITHIN SPECIFICATION $\pm 2\% + 4$ DIGIT.

林
 1/17
 1/17